

---

*Comfort-Cire*®

 **Century**®

**MARS**®  
Delivering Confidence

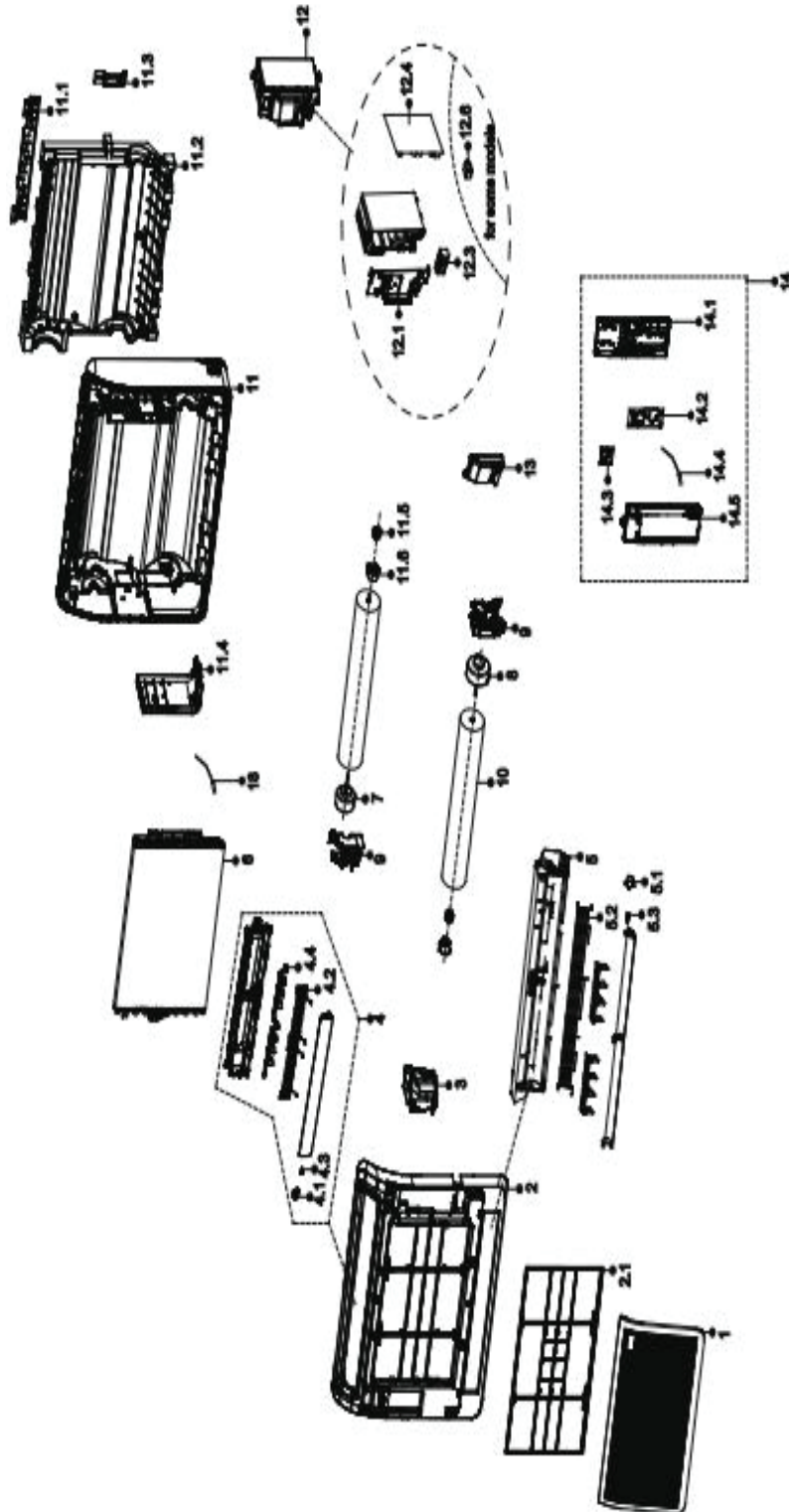
---

REPLACEMENT PARTS LIST

## FLOOR MOUNT INDOOR UNIT

B-VHP12WA-1

# EXPLODED VIEW



## REPLACEMENT PARTS

Location	Part Name	Quantity	Part No.
1	Panel subassembly	1.0	12122600000285
2	Panel frame assembly	1.0	12122600000288
2.1	Air filter	1.0	12122600000311
3	Water collector subassembly	1.0	12122600000309
4	Upper air outlet frame assembly	1.0	12122600000306
4.1	Stepper motor	1.0	11002010001486
4.2	Rear net	1.0	12922000002792
4.3	Insulated axis	1.0	12122000000344
4.4	Upper guide vane	2.0	12122600000310
5	Air outlet assembly	1.0	12122600000287
5.1	Stepper motor	1.0	11002010001106
5.2	Rear net	1.0	12922000002791
5.3	Insulated axis	1.0	12122000000344
6	evaporator assembly	1.0	15822600000147
7	DC motor	1.0	11002015008751
8	DC motor	1.0	11002015016692
9	The motor top cover	2.0	12122600000290
10	Centrifugal fan	2.0	12100102000876
11	Chassis assembly	1.0	12122600000425
11.1	Hang board subassembly	1.0	12222600000129
11.2	Thermal foam for Chassis	1.0	12822600000024
11.3	Hang board subassembly	1.0	12222600000148
11.4	mounting cover plate on Chassis	1.0	12122600000289
11.5	bearing base assembly	2.0	12622000000131
11.6	bearing holder	2.0	12122600000405
12	Electronic control box assembly	1.0	17222700002616
12.1	Cover of electronic control box	1.0	12122000025067
12.3	Terminal block	1.0	17400401000576
12.4	Main control board assembly	1.0	17122700002875
13	Cover of wiring terminal	1.0	12122000025064
14	Display box assembly	1.0	17222700002617
14.1	Display box	1.0	12122600000305
14.2	Display board assembly	1.0	17122700002878
14.3	Humidity sensor subassembly	1.0	17120100000394
14.4	Ambient temperature sensor subassembly	1.0	11201007003103
14.5	Display board subassembly	1.0	12122600000286
15	remote controller	1.0	17317000012078
17	Air cleaner	2.0	12100204000685
18	Pipe temperature sensor subassembly	1.0	11201007003437
25	Copper nut	1.0	15500406000016
25	Copper nut	1.0	15500406000010
26	Gas sensor	1.0	11201003000464

---

Due to ongoing product improvements, specifications and dimensions are subject to change and correction without notice or incurring obligations. Determining the application and suitability for use of any product is the responsibility of the installer. Additionally, the installer is responsible for verifying dimensional data on the actual product prior to beginning any installation preparations.

Incentive and rebate programs have precise requirements as to product performance and certification. All products meet applicable regulations in effect on date of manufacture; however, certifications are not necessarily granted for the life of a product. Therefore, it is the responsibility of the applicant to determine whether a specific model qualifies for these incentive/rebate programs.



1900 Wellworth Ave., Jackson, MI 49203 • Ph. 517-787-2100 • [www.marsdelivers.com](http://www.marsdelivers.com)

