

HWCR**T



LE Series

SPECIFICATIONS

- These efficient air handlers with fixed speed PSC blower motors are designed for use with a boiler loop, and packed with most wanted features

Application

- **Multi-Position Design** – Shipped upflow or horizontal right from the factory, can be field converted to downflow* or horizontal left applications
- **Line Voltage Terminal Block** – Allows fast, simple thermostat connection
- **Slide-Out Blower Assembly** – Mounted on rails to make maintenance and service fast
- **Freeze Protection for Both Heating & Cooling** – Protects the entire system year-round
- **3/4" Water Connections** – Assures correct water supply lines

Multi-Blower Speed

- Direct drive blower with three speeds easily selected via motor terminals
- Shipped from the factory with disposable filter in the filter rack

Electric Supply

- 120V, 60 Hz system
- Low voltage terminal block
- Connections can be made from cabinet top or left side

Hydronic Heat

- Comes with hydronic heat coil installed
- Controls are accessible from the front
- Freeze stat wired into circulating pump control circuit

Cabinet Features

- Durable galvanized steel cabinet has painted front panels
- 1/2" faced insulation throughout protects against sweating, enhances efficiency

Evaporator Coil

- Copper tube/enhanced aluminum fins
- Non-corrosive drain pans
- Primary and secondary drain connections with alternate right side primary
- Factory installed TXV

*Downflow application requires a downflow kit for all models. See Page 4 for complete list.

HYDRONIC AIR HANDLER

PSC Motor & TXV Matched

Compact Models Available!



1-1/2 to 5 Tons



Certification applies only when complete system is listed with AHRI.



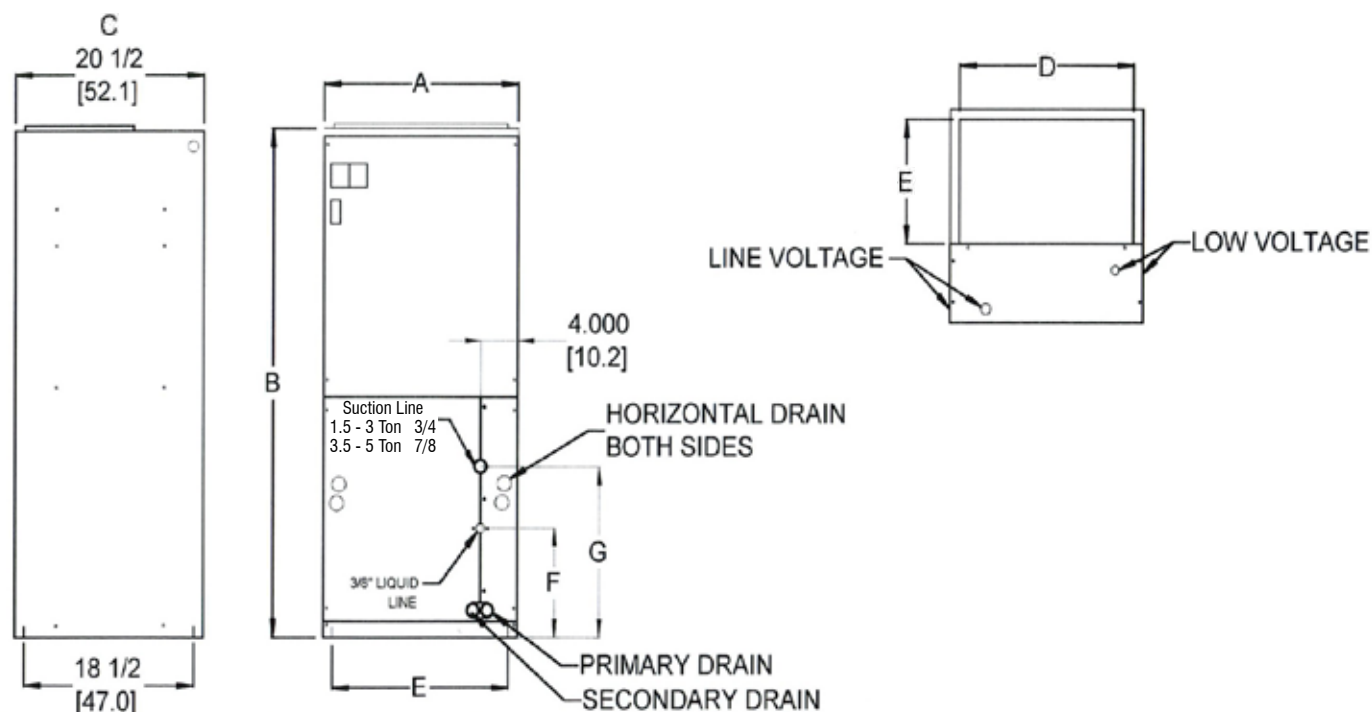
Warranty—6 years on parts
(Some limitations apply; see printed warranty for details.)

www.century-hvac.com

MODEL NUMBER GUIDE

H	W	C	R	24	T	O	A
Air Handler	Water Heat (Hydronic)	Aluminum Fin/ Copper Tube Coil	R454B	BTUH Capacity x 1000	TXV with PSC Blower Motor	Voltage Code 0=115V-1-60	Revision Level

HYDRONIC AIR HANDLER (24,36,48,60) WITH PSC MOTOR



PHYSICAL DIMENSIONS

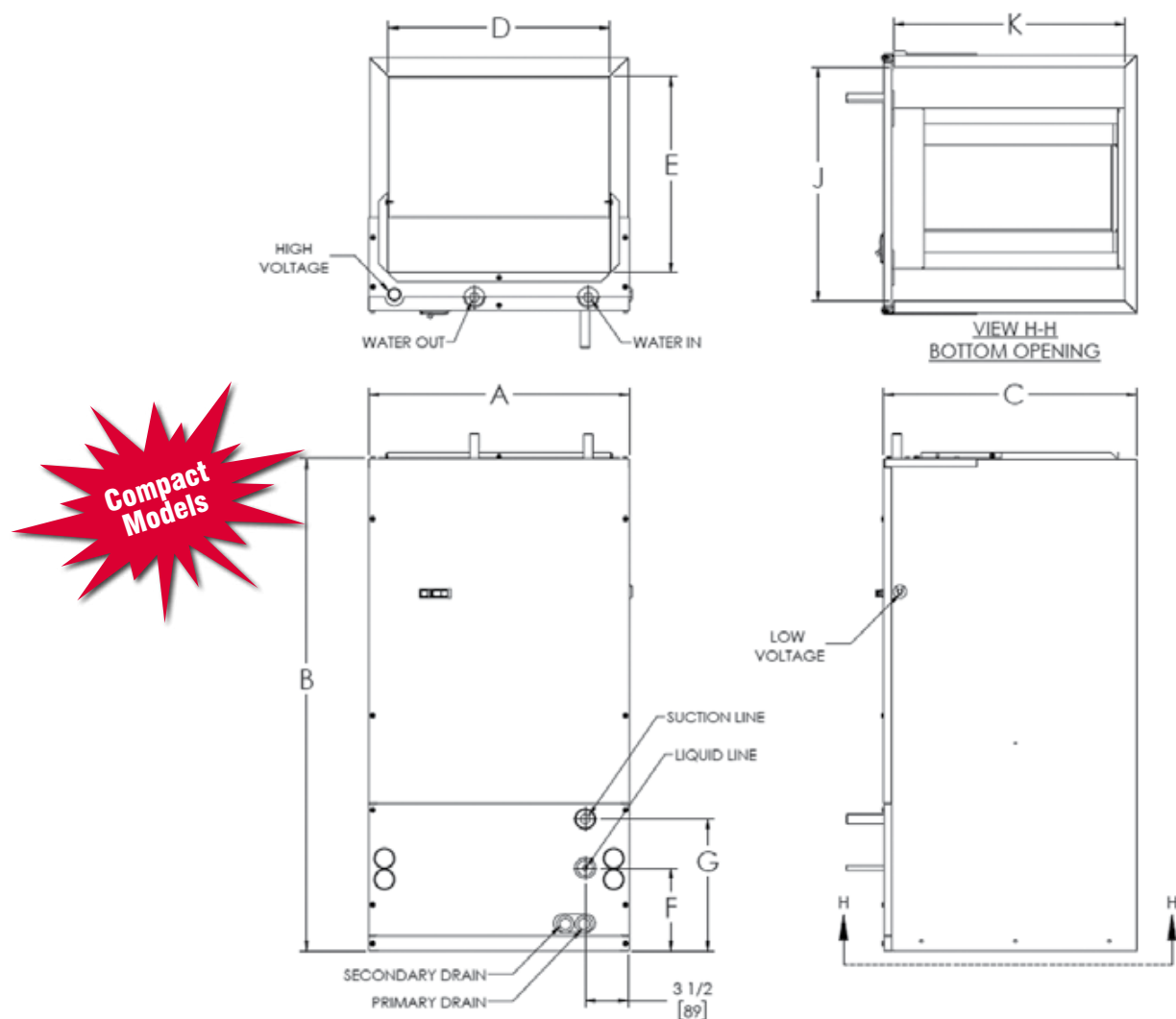
MODEL	A	B	C	D	E	F	G	FILTER SIZE	PISTON SIZE	SHIPPING WT LBS
HWCR24T	21	49 1/4	20 1/2	18 3/4	12	8 1/4	12 1/4	16 x 20	0.059	100
HWCR36T	21	49 1/4	20 1/2	18 3/4	12	8 1/4	12 1/4	16 x 20	0.074	147
HWCR48T	24 1/2	57	20 1/2	22 1/4	14 3/4	13	18	20 x 20	0.084	180
HWCR60T	24 1/2	57	20 1/2	22 1/4	14 3/4	13	18	20 x 20	0.092	200

PERFORMANCE DATA - 3.5 GPM PUMP (NOT PROVIDED MUST BE FIELD INSTALLED)

MODEL	PERFORMANCE DATA						ELECTRICAL DATA	
	COOLING NOM. TONS	HEATING COIL		HEATING CAP BTUH @ 3.5 GPM*			MIN. CIRC. AMPACITY	MAX. FUSE/ CIRCUIT BREAKER
		ROW	SIZE	120° F EWT	140° F EWT	180° F EWT		
HWCR24T	1.5 - 2.0	3	18" X 12"	21,600	30,500	48,400	4.1	15A
HWCR36T	2.5 - 3.0	3	18" X 12"	29,800	42,100	67,300	7.4	15A
HWCR48T	3.5 - 4.0	4	22" X 14 1/2"	45,900	64,900	98,000	12.5	25A
HWCR60T	5.0	4	22" X 14 1/2"	47,800	67,600	102,200	12.5	25A

*At high speed setting

HYDRONIC AIR HANDLER (23,35,47) WITH PSC MOTOR



MODEL NUMBER GUIDE

MODEL	A	B	C	D	E	F	G	J	K	FILTER SIZE	PISTON SIZE	SHIPPING WT LBS
HWCR23T	21	40	20 1/2	18	16	6 3/4	10 3/4	18 1/2	18 1/2	16 x 20	0.059	100
HWCR35T	21	42	23	18	19	8 3/4	12 3/4	18	20	20 x 20	0.068	170
HWCR47T	21	48	28	18	24	11 3/4	15 3/4	18	25	20 x 25	0.084	200
HWCR59T	21	48	28	18	24	11 3/4	15 3/4	18	25	20 x 25	0.084	200

PERFORMANCE DATA - 3.5 GPM PUMP (NOT PROVIDED MUST BE FIELD INSTALLED)

MODEL	PERFORMANCE DATA						ELECTRICAL DATA	
	COOLING NOM. TONS	HEATING COIL		HEATING CAP BTUH @ 3.5 GPM*			MIN. CIRC. AMPACITY	MAX. FUSE/CIRCUIT BREAKER
		ROW	SIZE	120° F EWT	140° F EWT	180° F EWT		
HWCR23T	1.5 - 2.0	3	2.1	25,000	35,300	56,300	4.1	15A
HWCR35T	2.5 - 3.0	4	1.1	38,750	54,805	84,820	7.4	15A
HWCR47T	3.5 - 4.0	4	0.8	48,200	68,125	98,640	12.5	25A
HWCR59T	3.5 - 5.0**	4	0.8	48,200	68,125	98,640	12.5	25A

*At high speed setting

**Due to limited airflow - not all 5-Ton condensers will work. Check approved matches on www.marsdeliversratings.com or www.ahridirectory.org

DOWNFLOW KITS

MODEL	AIR HANDLER MATCH
DFK-2	HWCR24X, HWCR24T
DFK-3	HWCR23X, HWCR23T
DFK-5	HWCR30X
DFK-6	HWCR35X, HWCR35T
DFK-7	HWCR36T
DFK-9	HWCR42X, HWCR48X, HWCR60T
DFK-10	HWCR47X, HWCR47T, HWCR59X, HWCR59T
DFK-11	HWCR48T
DFK-12	HWCR60X

BLOWER DATA

MODEL	MOTOR HP	MOTOR VOLTAGE	SPEED TAP	CFM* V. EXTERNAL STATIC					AMPS
				0.10	0.20	0.30	0.40	0.50	
HWCR24T	1/5	115-1-60	Low	780	740	700	645	585	2.8
			High	850	800	745	685	620	
HWCR36T	1/3	115-1-60	Low	925	910	850	825	800	5.8
			High	1330	1270	1205	1140	1070	
HWCR48T HWCR60T	3/4	115-1-60	Low	1360	1340	1310	1280	1230	9.5
			Medium	1530	1470	1420	1360	1310	
			High	1730	1670	1600	1540	1480	

BLOWER DATA - COMPACT MODELS

MODEL	MOTOR HP	MOTOR VOLTAGE	SPEED TAP	CFM* V. EXTERNAL STATIC					AMPS
				0.10	0.20	0.30	0.40	0.50	
HWCR23T	1/5	115-1-60	Low	825	780	735	675	630	2.8
			High	865	815	780	705	640	
HWCR35T	1/3	115-1-60	Low	995	980	750	915	885	5.8
			High	1220	1165	1130	1060	1000	
HWCR47T HWCR59T	3/4	115-1-60	Low	1350	1315	1300	1245	1205	9.5
			Medium	1500	1450	1400	1350	1315	
			High	1670	1615	1560	1515	1450	

Due to ongoing product improvements, specifications and dimensions are subject to change and correction without notice or incurring obligations. Determining the application and suitability for use of any product is the responsibility of the installer. Additionally, the installer is responsible for verifying dimensional data on the actual product prior to beginning any installation preparations. Third party incentive and rebate programs have precise requirements as to product performance and certification. All products meet applicable regulations in effect on date of manufacture; however, certifications are not necessarily granted for the life of a product. Therefore, it is the responsibility of the applicant to determine whether a specific model qualifies for these incentive/rebate programs.

"This product complies with all California product labeling laws including, but not limited to, the Safe Drinking Water and Toxic Enforcement Act of 1986, more commonly known as Proposition 65."